



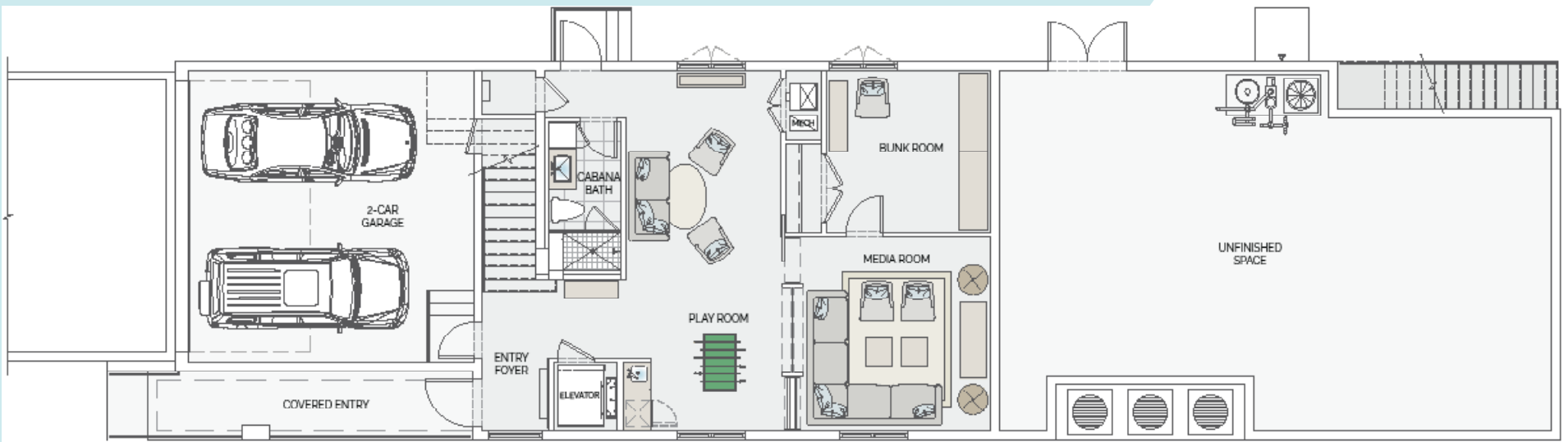
# BEACH HOME FLOORPLAN

- 5 Bedrooms / 5.5 Bathrooms
- 6,058 SF Total Living
- 4,239 SF Under Air
- 1,200 SF Outdoor Terrace
- Direct Ocean & Intracoastal Views from the Top Two Living Levels
- Indoor/Outdoor Living Space with Stackable Sliders
- 12' Ceilings Throughout
- 8' Solid Core Wood Interior Doors
- 10' Sliders
- Smart Home
- Fully Furnished
- Designer-Selected Finishes
- Gourmet Sub-Zero & Wolf Appliances
- Dry Bar on Each Living Level
- Private Oceanfront Pool
- Outdoor Shower
- Private Walkway to the Beach
- Lush Landscaping
- Private Elevator
- Private Storage





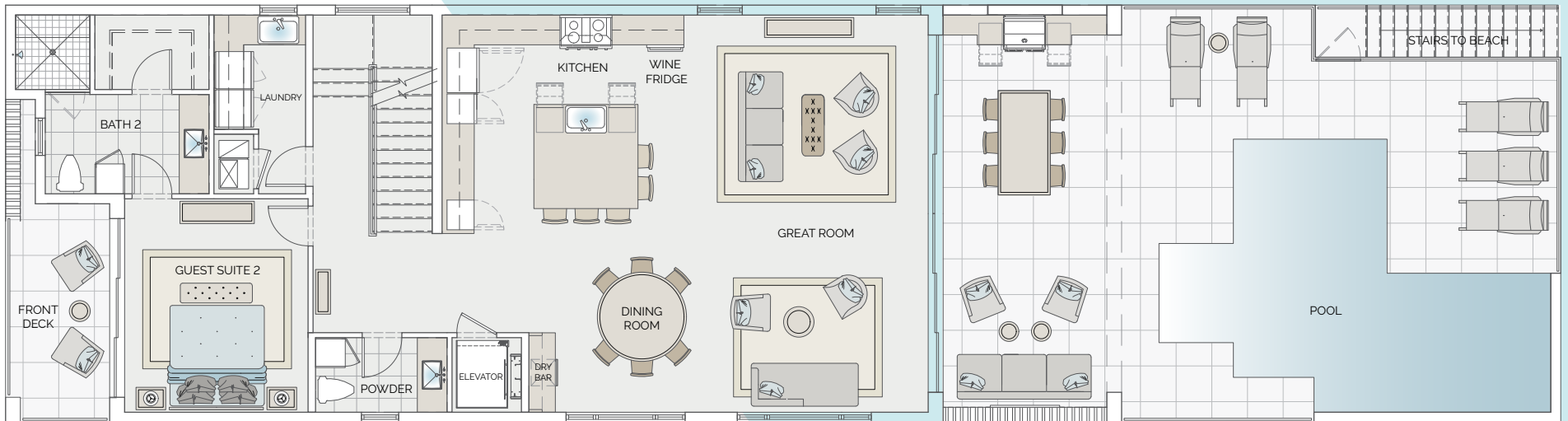
- 2-Car Garage with Electric Car Charger
- Media Room
- Bunk Room
- Play Room
- Cabana Bath



Sketches and illustrations are artist's renderings. Details and field variations are subject to change. All dimensions are approximate and all floor plans and development plans are subject to change. There are various methods for calculating the total square footage of a condominium unit, and depending on the method of calculation, the quoted square footage of a condominium unit may vary by more than a nominal amount. The dimensions stated in this brochure are measured to the exterior boundaries of the exterior walls and the centerline of interior demising walls and, in fact, are larger than the dimensions of the "beach home units" as defined in the declaration of condominium for Ouanalao Beach Homes Condominium Association budget which is measuring using interior measurements.

LEVEL ONE FLOORPLAN

- Designer Kitchen
- 2 Dishwashers
- Dining Room
- Great Room
- Private Oceanfront Pool
- Summer Kitchen
- 2 Stackable Washer & Dryers

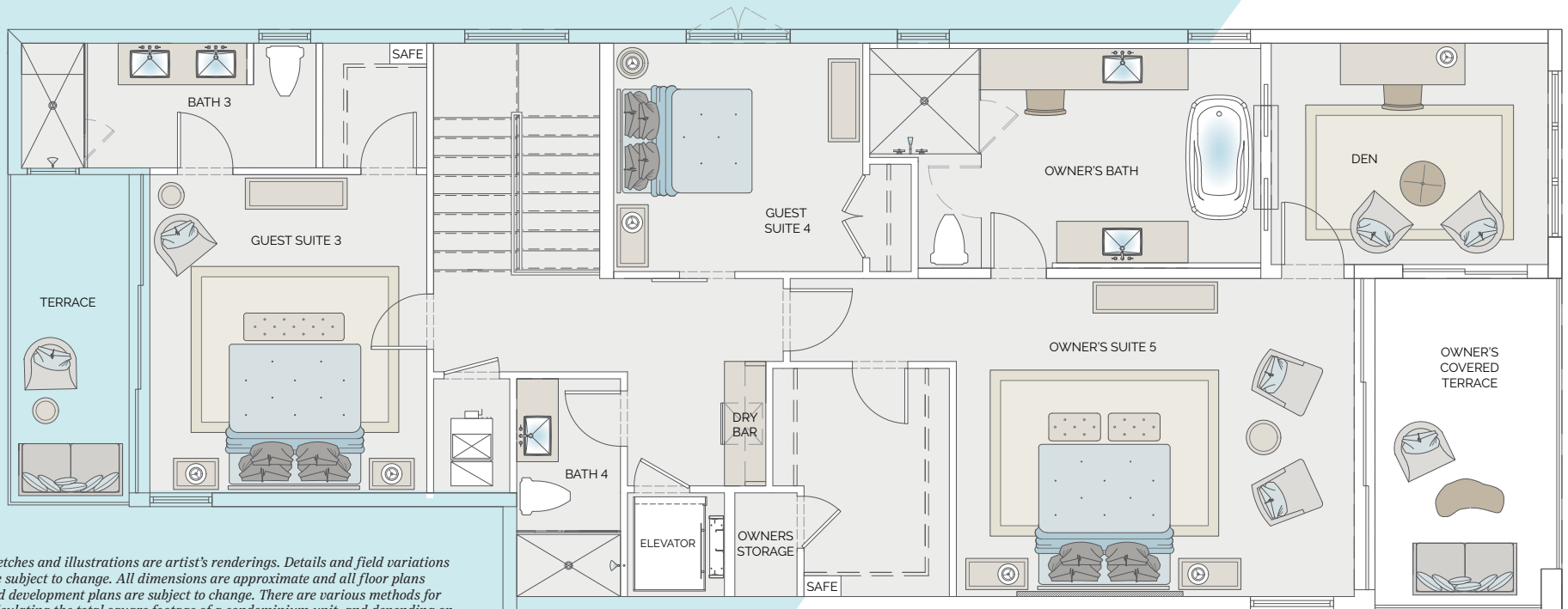


## LEVEL TWO FLOORPLAN

Sketches and illustrations are artist's renderings. Details and field variations are subject to change. All dimensions are approximate and all floor plans and development plans are subject to change. There are various methods for calculating the total square footage of a condominium unit, and depending on the method of calculation, the quoted square footage of a condominium unit may vary by more than a nominal amount. The dimensions stated in this brochure are measured to the exterior boundaries of the exterior walls and the centerline of interior demising walls and, in fact, are larger than the dimensions of the "beach home units" as defined in the declaration of condominium for Ouanalao Beach Homes Condominium Association budget which is measuring using interior measurements.



- Owner's Suite
- 2 Guest Suites
- Covered Terrace
- Den
- Private Storage



Sketches and illustrations are artist's renderings. Details and field variations are subject to change. All dimensions are approximate and all floor plans and development plans are subject to change. There are various methods for calculating the total square footage of a condominium unit, and depending on the method of calculation, the quoted square footage of a condominium unit may vary by more than a nominal amount. The dimensions stated in this brochure are measured to the exterior boundaries of the exterior walls and the centerline of interior demising walls and, in fact, are larger than the dimensions of the "beach home units" as defined in the declaration of condominium for Ouanalao Beach Homes Condominium Association budget which is measuring using interior measurements.

## LEVEL THREE FLOORPLAN